

Legg Mason Martin Currie Asia Long-Term Unconstrained Fund

Fund details

Investment objective:

To capture Asian gross domestic product ("GDP") growth (meaning to generate returns that are consistent with Asian GDP growth) and to provide an attractive risk/return profile in an historically volatile market using a long only equity strategy.

Inception date: March 11, 2016

Predecessor Fund's inception date* May 16, 2012

Investment manager:
Martin Currie

Fund statistics

Total net assets (in millions)	\$246.08
Month end NAV - CI M Distr. (A)	\$13.31
Number of holdings	26
Percentage of top ten holdings	53.40
Weighted average market cap (in millions)	\$99,764.43

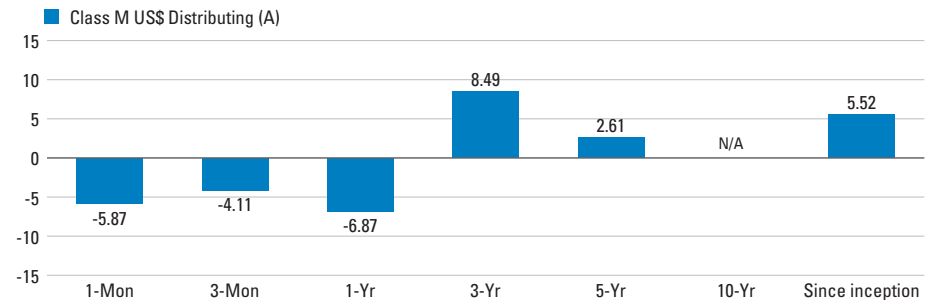
Total Expense Ratio (%)

CI M Distr. (A) Gross	1.46
CI M Distr. (A) Net	1.20

Market cap exposure (%) (millions)

More than \$100,000	44.23
\$50,000 - \$100,000	3.21
\$25,000 - \$50,000	11.46
\$10,000 - \$25,000	20.26
\$5,000 - \$10,000	14.27
Less than \$5,000	6.57

Fund performance (%)



Performance history (%)

Calendar year performance	YTD	2018	2017	2016	2015
M Distr. (A)	2.00	-10.75	35.38	3.71	-11.13

Return information presented is stated in U.S. Dollars and is calculated using the share class indicated above after all Fund operating expenses. Investment return and principal value of an investment in the Fund will fluctuate, and shares may be worth more or less than their original cost when redeemed. Total return data is as of the date indicated and reflects the reinvestment of distributions. Performance statistics are for the share class indicated only; return figures and other data for other classes of shares will vary. Return figures for periods over one year are annualized. The performance shown represents past performance and is no guarantee of future results.

From 25 March 2019, the pricing of securities held in the Fund will use the mean (or mid) value of the bid and ask prices, to calculate the Fund's Net Asset Values ("NAV"). The Fund previously used a bid price methodology for fixed income securities, and last traded price for equity securities.

** Performance shown includes periods prior to the Fund's inception date, reflecting performance of a predecessor fund with a substantially similar investment objective and policy and whose assets were transferred into this Fund on the date indicated above. The performance data should be used for illustrative purposes only, as performance prior to the inception date has not been adjusted to reflect the higher fees of the Fund.*

Please contact your financial professional for performance data as of the most recent month or quarter-end.

Top ten holdings (%)

Tencent Holdings Ltd	7.57	Infosys Ltd	4.74
AIA Group Ltd	7.44	Singapore Technologies Engineering Ltd	4.68
Ping An Insurance Group Co of China Ltd	5.56	Tata Consultancy Services Ltd	4.56
HSBC Holdings PLC	5.48	United Overseas Bank Ltd	4.26
Guangdong Investment Ltd	4.91	Jardine Matheson Holdings Ltd	4.20

Sector breakdown (%)

Financials	32.13	Industrials	8.89
Information Technology	17.52	Utilities	8.62
Consumer Discretionary	15.01	Consumer Staples	4.13
Communication Services	11.22	Other inc. Cash	2.48

Country Allocation (%)

China	28.19	Thailand	2.81
India	22.10	Taiwan	2.52
Hong Kong	19.80	Malaysia	2.38
South Korea	9.97	Indonesia	0.78
Singapore	8.94	Other inc. Cash	2.51

Legg Mason Martin Currie Asia Long-Term Unconstrained Fund

Share class information

Class	Cusip	Bloomberg	ISIN
M Distr. (A)	G5S470395	MCALTMU	IE00BYWVL276
A Acc.	G5S471310	MCALTAA	IE00BDCRQ451
E Acc.	G5S471328	MCALTEA	IE00BDCRQ568

Investment risks

All investments involve risk, including the possible loss of principal. Investment in company shares: The fund invests in shares of companies, and the value of these shares can be negatively affected by changes in the company, its industry or the economy in which it operates. **Geographical focus:** This fund invests primarily in Asia, which means that it is more sensitive to local economic, market, political or regulatory events in Asia, and will be more affected by these events than other funds that invest in a broader range of regions. **Emerging markets investment:** The fund may invest in the markets of countries which are smaller, less developed and regulated, and more volatile than the markets of more developed countries. **Investment in China:** The fund invests in China and is subject to the risk of significant change in political, social or economic policy in China, which may negatively affect the value of such investments. **Concentrated fund:** The fund invests in fewer companies than other funds which invest in shares usually do. This means that the fund does not spread its risk as widely as other funds and will therefore be affected more if an individual company has significant losses. **Fund currency:** Changes in exchange rates between the currencies of investments held by the fund and the fund's base currency may negatively affect the value of an investment and any income received from it. **Derivatives:** The use of derivatives can result in greater fluctuations of the fund's value and may cause the fund to lose as much as or more than the amount invested. **Fund operations:** The fund is subject to the risk of loss resulting from inadequate or failed internal processes, people or systems or those of third parties such as those responsible for the custody of its assets, especially to the extent that it invests in developing countries.

Important information

Investors should consider the Fund's investment objectives, risks, charges, and expenses carefully before investing. You can find this and other important information in the Fund's prospectus. It can be found at www.leggmasonamericasinternational.com, or by contacting your financial professional. Please read the prospectus carefully.

NOT FOR SALE IN THE U.S. OR TO U.S. PERSONS.

It is the responsibility of the dealer to ensure that the offering and sale of fund shares complies with relevant national law. Fund shares may not be sold to citizens or residents of the United States or in any other state or jurisdiction where it would be unlawful to offer, solicit an offer for, or sell the shares. Residents of the domicile of the fund family may not be eligible to purchase the Fund. This document is neither intended to be, nor constitutes, a public offering to sell shares of any mutual fund.

The Fund is a sub-fund of the Legg Mason Global Funds plc, an umbrella fund, with segregated liability between sub-funds, established as an open-ended investment company with variable capital and incorporated with limited liability under the laws of Ireland with registered number 278601. It qualifies, and is authorized in Ireland by the Central Bank of Ireland as an undertaking for collective investment in transferable securities.

The top ten holdings and sector breakdown are provided for information purposes only and should not be deemed a recommendation to buy or sell the securities mentioned. A negative cash position may be apparent, which is primarily due to the Fund's unsettled trade activity. This is a more concise approach to defining the cash position and it best represents sector exposures in the Fund.

Portfolio characteristics are based on the total portfolio as of month-end and are subject to change at any time. There is no guarantee that the Fund will achieve its objective.

Definitions

Total Expense Ratio ("TER"): The TER represents the Fund's actual operating expenses over the past 12 months as of the date indicated. The TER includes investment management fees, custody and administration fees, shareholder service fees, and other expenses. For those share classes which have not been active for an entire year the TER presented is annualized. The Gross Expense ratio reflects the Fund's actual total expenses incurred and do not reflect any fee waivers and/or expense reimbursements. The Net Expense is the Gross Expense less the advisory fee waivers and/or expense reimbursements. Net Expense reflects the expenses being charged to the fund or share class and reflected in the Net Asset Value. The fee waivers and/or expense reimbursements are voluntary and can be eliminated at any time.

For Distributing share classes D= Daily dividend accrual, monthly distribution; M= Monthly distribution; S= Semiannual distribution; A= Annual distribution; Q= Quarterly distribution.